

SHADESCAPES AMERICAS

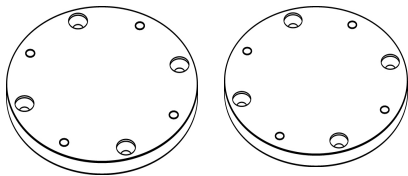
WOOD DECK MOUNT KIT

INSTALLATION MANUAL

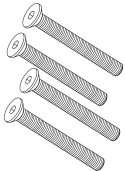
Please thoroughly read this installation manual before installing the Concrete Mount System, and before assembling and operating the Umbrosa Umbrella. The Umbrosa Warranty does not cover damage caused by incorrect installation, wind, or wrongful use of the product. All users must be properly trained in operation and wind guidelines.

Once installed, always use COMMON SENSE WIND GUIDELINES: If it is too windy to be outside enjoying the day, it is best to lower/collapse the Umbrella Frame w/ Fabric Canopy. It is also important to keep it lowered/collapsed when unattended. See manufacturer's limited warranty on page 2.

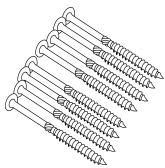
A COMPONENTS LIST & REQUIRED TOOLS



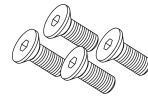
2X - BASE PLATE (BP)
Box A



4X - 10x75mm DECK BOLTS (A3)
Box A



8X - 4" WOOD DECK SCREWS (A4)
Box A



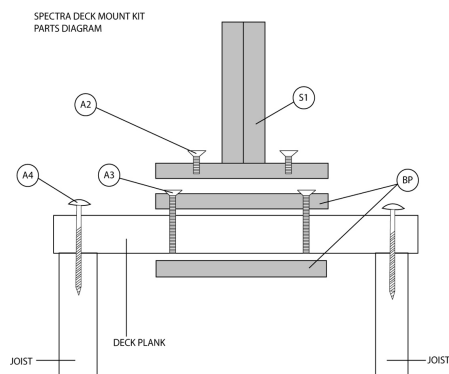
4X - 10x20mm SPIGOT BOLTS (A2)*
1X - 6mm ALLEN WRENCH (T2)
Box A



REQUIRED TOOLS LIST (not included):
Standard Electric Drill
3/8" Wood Drill Bit
Carpenter's Level & Pencil

**PLEASE NOTE THE SPIGOT BOLTS ARE LOCATED IN THE DECK MOUNT BOX, BUT WILL NOT BE USED UNTIL YOU BEGIN TO INSTALL THE SPIGOT FOR YOUR UMBROSA UMBRELLA. SEE YOUR THE OWNERS MANUAL THE SPECIFIC UMBRELLA YOU PURCHASED FOR DETAILS.*

B MOUNTING INSTRUCTIONS



1:

Determine a level location to install the Wood Deck Mount Kit. Check the surface using a Carpenter's Level. Review the illustration to the left to understand the placement of each component used to complete the installation.

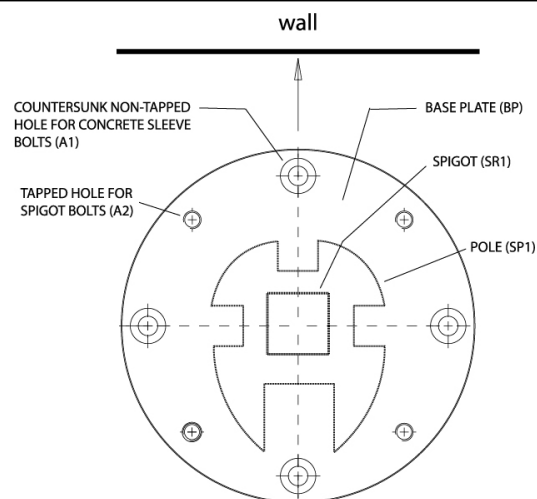
NOTE: One Base Plate (BP) is placed on top of the wood deck and the second Base Plate below the wood deck. The Base Plates must be positioned between two joists.

2:

The Base Plate has four (4) countersunk holes and four (4) tapped holes. For Spectra and Paraflex umbrellas, line up the tapped holes SQUARE to whatever you are aligning your Umbrella with, for example your house, edge of patio, etc., as shown in the diagram to the right.

Note: Depending on the product you purchased, the Spigot (SR1), and Pole (SP2) referenced in the diagram to the right may be packed separately. This diagram is for reference only and these parts are not needed until the Deck Mount Kit has been installed.

BASE PLATE IS NO LONGER BLACK,
SEE BASE OPTIONS TAB ON WEBSITE (STEEL)

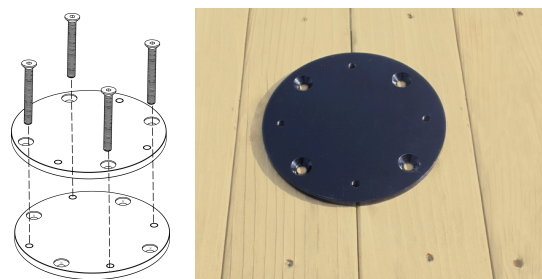


3:

- (a) Properly position and align the top Base Plate (BP).
- Use a pencil to mark the center of each countersunk hole.
- (b) Using a 3/8" Wood Drill Bit, place the point of the Wood Drill Bit into the center of the mark and drill four (4) vertical holes through the deck plank.

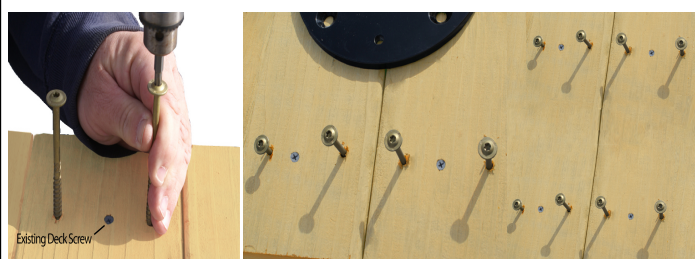
4:

- (a) Place the Base Plate (BP) over the drilled holes.
- (b) Rotate the bottom Base Plate (to be installed under the deck planks) 90 degrees to align the tapped holes of the bottom Base Plate with the countersunk holes of the top Base Plate. Connect the two Base Plates with the four (4) Deck Bolts (A3). Tighten the Deck Bolts using the 6mm Allen Wrench (T2), until the two Base Plates are fully secured to the deck.



5:

- (a) Provide structural reinforcement to the deck planks by installing the eight (8) Wood Deck Screws (A4).
- (b) Install two Wood Deck Screws on each of the two deck planks, going through the planks and into the joists.
- (c) Repeat on the other side of the Base Plate, until all eight (8) Deck Screws are used, completing the installation of the Wood Deck Mount Kit.



You are now ready to mount the Spigot for your Umbrella to the Wood Deck Mount Kit. Locate your Owners Manual and use those instructions to complete your installation.

C WARRANTY

Umbrosa NV warrants to the consumer that the Spectra product is free from manufacturer defects in material or workmanship for a period of three (3) years from the date of original purchase when used in compliance with directions as outlined in the manufacturer's instructions, which includes reasonable and necessary maintenance by the consumer. Warranty does not include normal wear and tear of product. Umbrosa takes no responsibility for incorrect use or assembly related to installation area, consistency of supports and relative hardware used, and capacity of mounting surfaces. Failure to follow the given assembly, maintenance, use and care instructions will void the product warranty. In case of manufacturing defects in material or workmanship, Umbrosa NV, agrees to, at their discretion, send the replacement part for all defective parts.

Distributed by Shadescapes Americas www.shadescapesamericas.com; 818.217.4446. For assembly assistance or questions please contact ShadeScapes Americas at 970.527.7070, or email support@shadescapesusa.com.